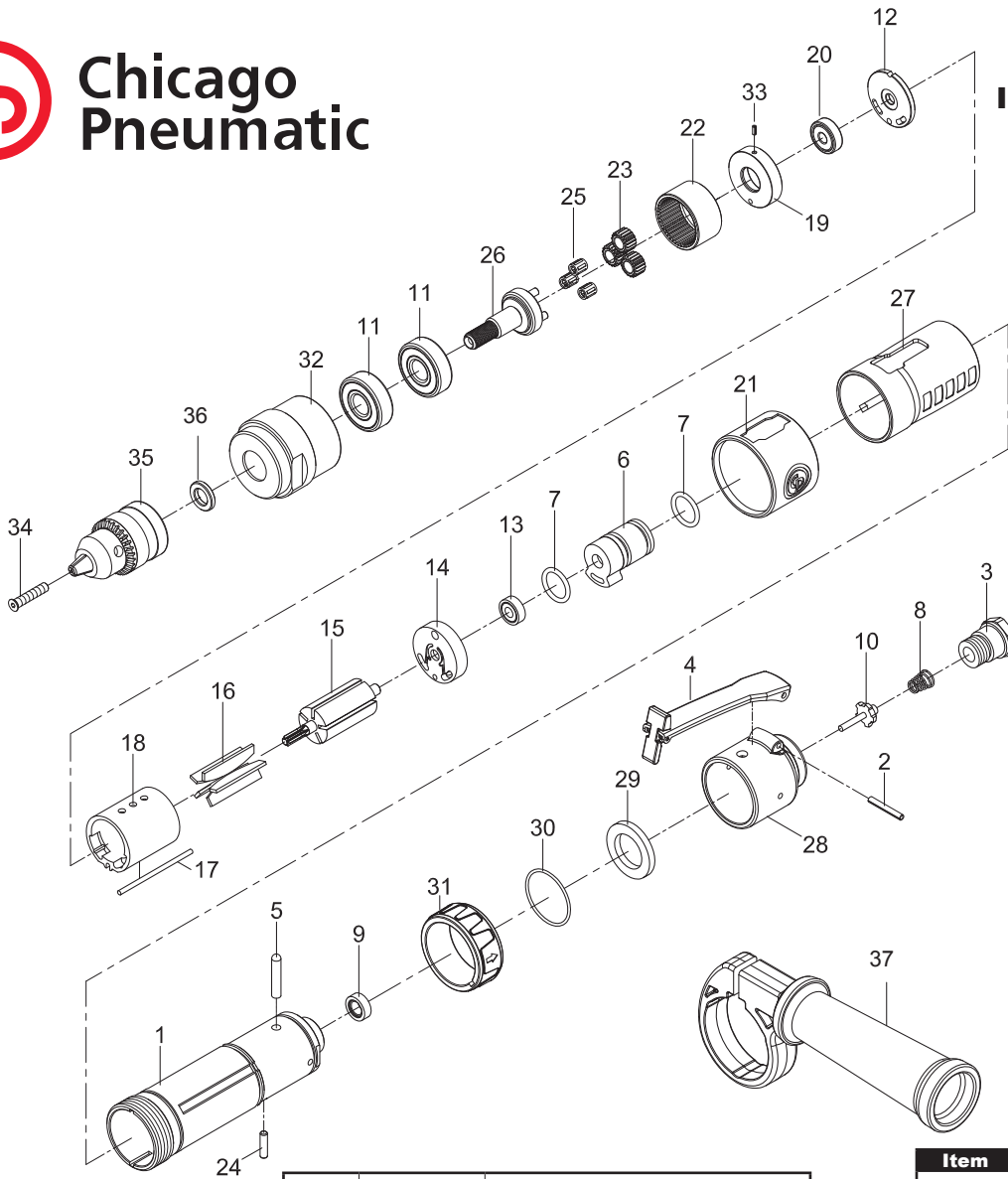




**Chicago
Pneumatic**

**CP887C
INLINE 3/8" KEY DRILL
Serie C**



	8950900061	Warning Label
	8940175195	Operator's Manual
	6159948740	Safety Instructions

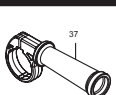
Item	Glue	Tightening torque
01 - 03	Loctite 243	⌚ 22.1 ft.lb - 30 Nm
01 - 32		⌚ 36.9 ft.lb - 50 Nm

Ref	CP Part No.	Description	Q'ty
A	8940175394	Trigger Kit	1
2		Spring Pin (3x22l)	1
4		Throttle Lever	1
5		Pin	1
B	8940175395	Throttle Kit	1
8		Spring	1
9		Rubber Spacer	1
10		Valve Stem	1
C	8940175396	Regulator Kit	1
6		Reverse Valve	1
7		O-Ring (15.8x2.4)	2
24		Pin (4x13.8l)	1
31		Reversing Valve Knob	1
D	8940175397	Motor Housing Kit	1
1	8940175352	Motor Housing	1
27		Grip	1
28		Rear Cover	1
30		O-Ring (31x1.5)	1
E	8940175398	Rear End-Plate Kit	1
13		Ball Bearing (696zz)	1
14		Rear End Plate	1
F	8940175399	Front End-Plate Kit	1
12		End Plate	1
19		Front End Plate	1
20		Ball Bearing (626zz)	1
33		Spring Pin (2x5l)	1

Ref	CP Part No.	Description	Q'ty
G	8940175400	Gear Box Kit	1
22		Internal Gear	1
23		Planet Gear	3
25		Needle Bearing	3
26		Work Spindle	1
H	8940175401	Service Gear Kit	
		Include 23(x3) & 25(x3)	
SP	8940175402	Small Parts Kit	
		Include 2, 5, 12, 17, 24, 29, 30, 33, 34 & 36	
TK	8940175403	Tune-Up Kit	
		Include 7(x2), 9 & 16	

3	8940175354	Air Inlet	1
11	2050486953	Ball Bearing (6201z)	2
15	2050485903	Rotor	1
16	2050485913	Rotor Blades (Set Of 5)	1
18	2050485933	Cylinder	1
21	8940175362	Front Sleeve	1
32	8940175369	Clamp Nut	1
35	8940175370	Key Chuck (3/8") & Key (Not Shown)	1

Recommended Accessories



8940175371
Side Handle



Protecto-lube Oil
CA149661 (4 oz - 0.12 l)
CA000046 (20 oz - 0.59 l)



Airoilene Oil
P089507 (1 gal - 3.8 l)